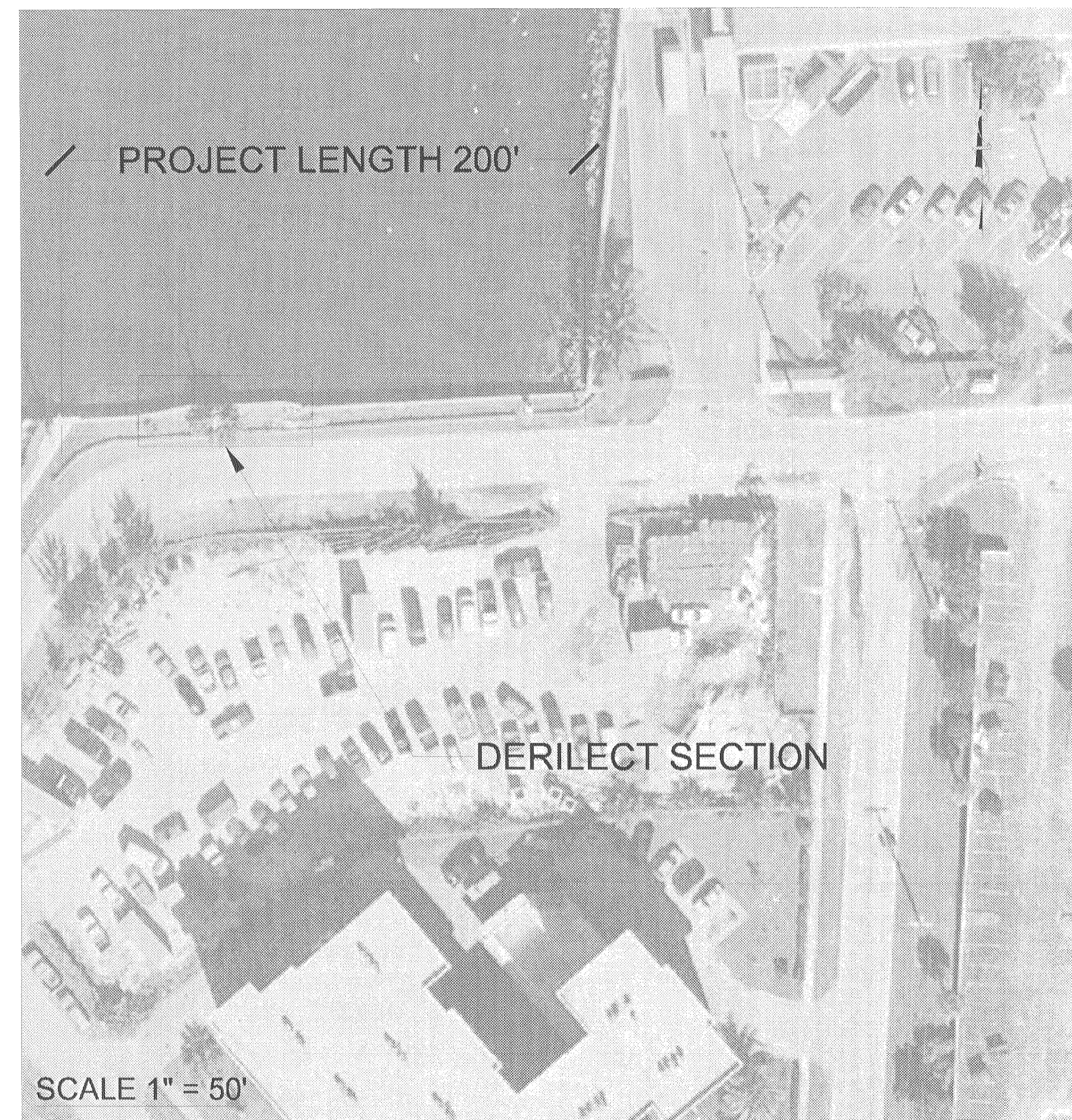
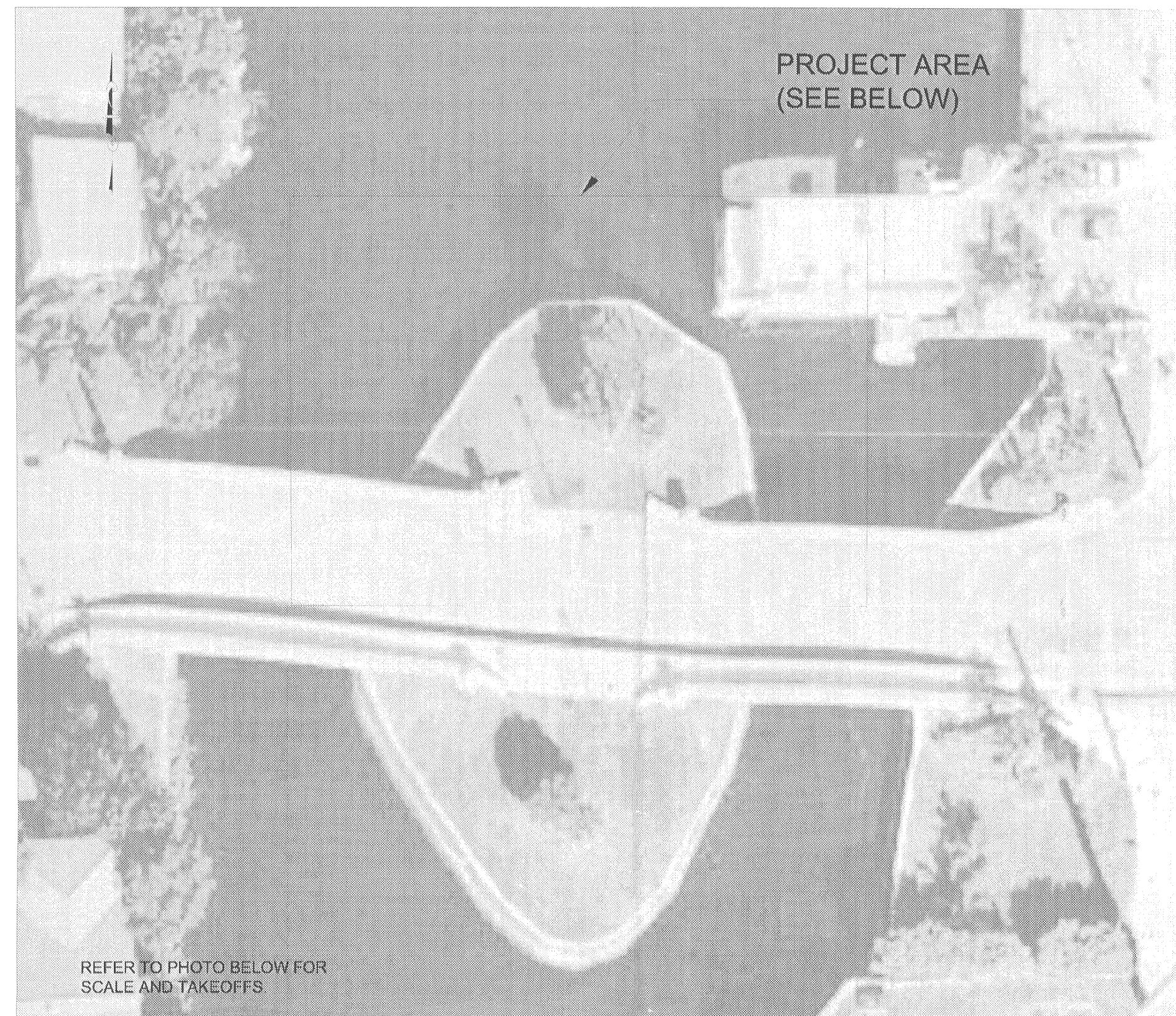


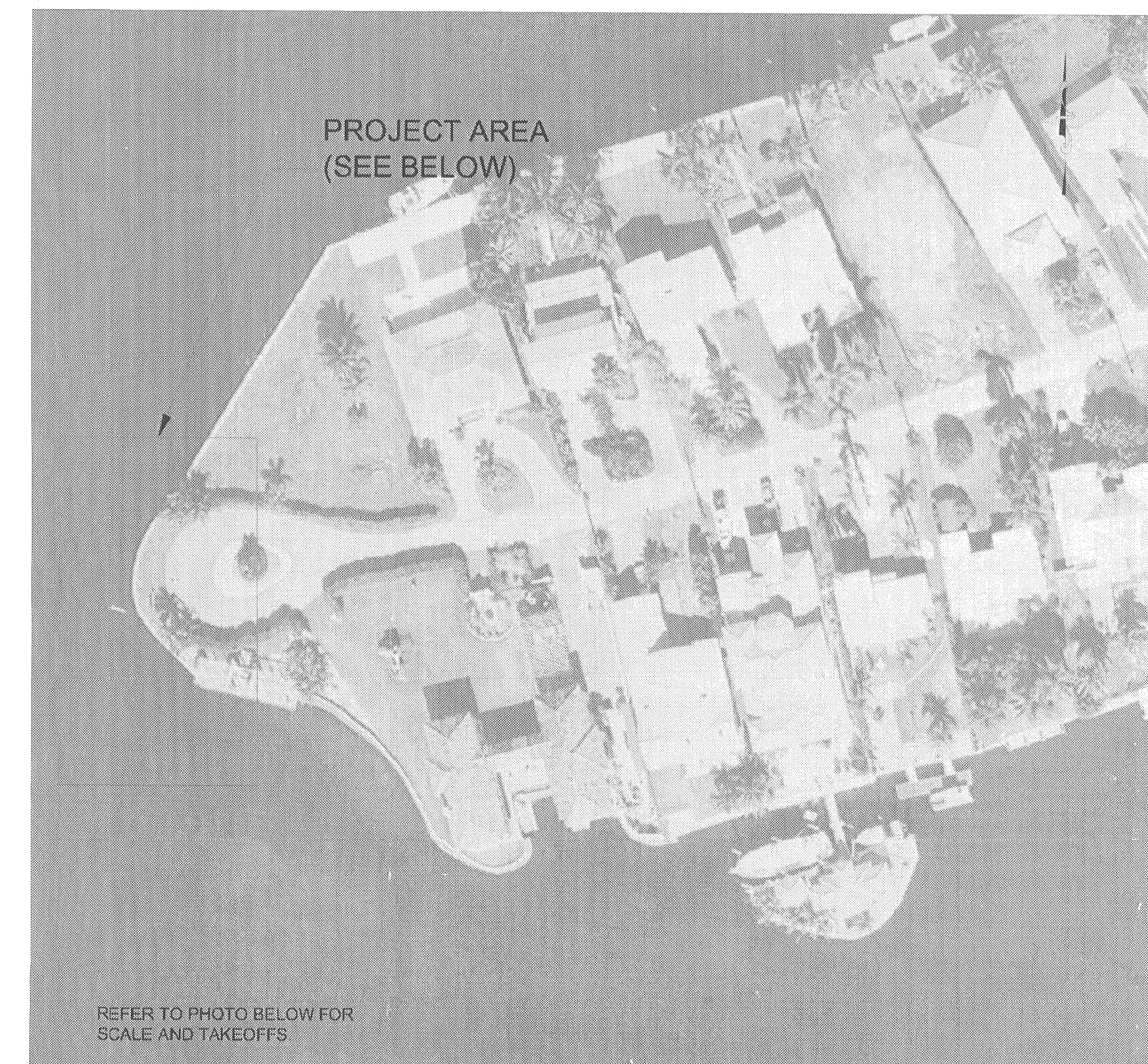
WALKDOWN INFORMATION		TECHNICAL ACCEPTANCE	
AS-BUILT INFORMATION	ORG BY DATE	ENGINEERING ORGANIZATION	ORG BY DATE



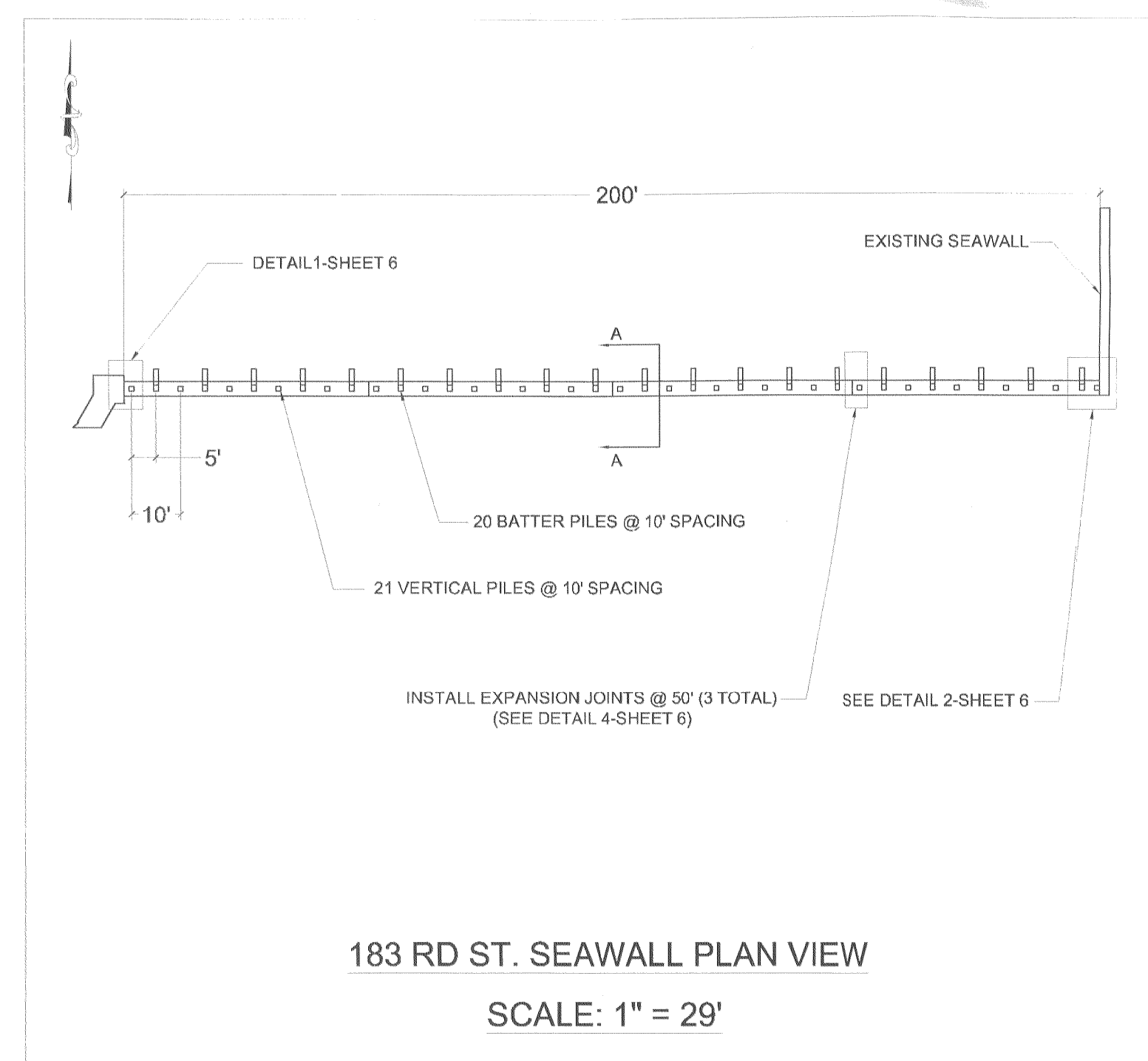
183 RD ST. SEAWALL
AERIAL PHOTO



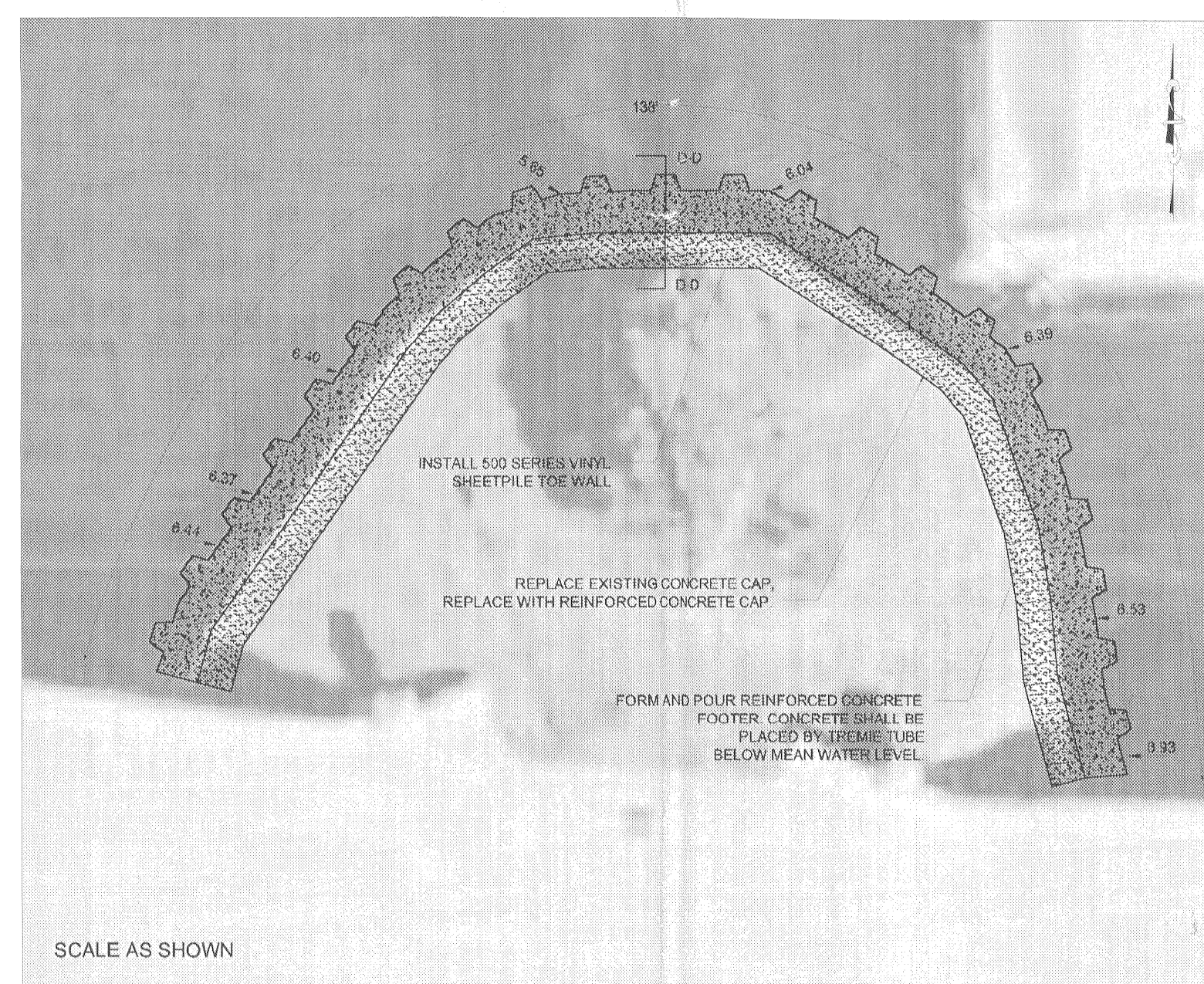
ATLANTIC AVE. BRIDGE REVETMENT
AERIAL PHOTO



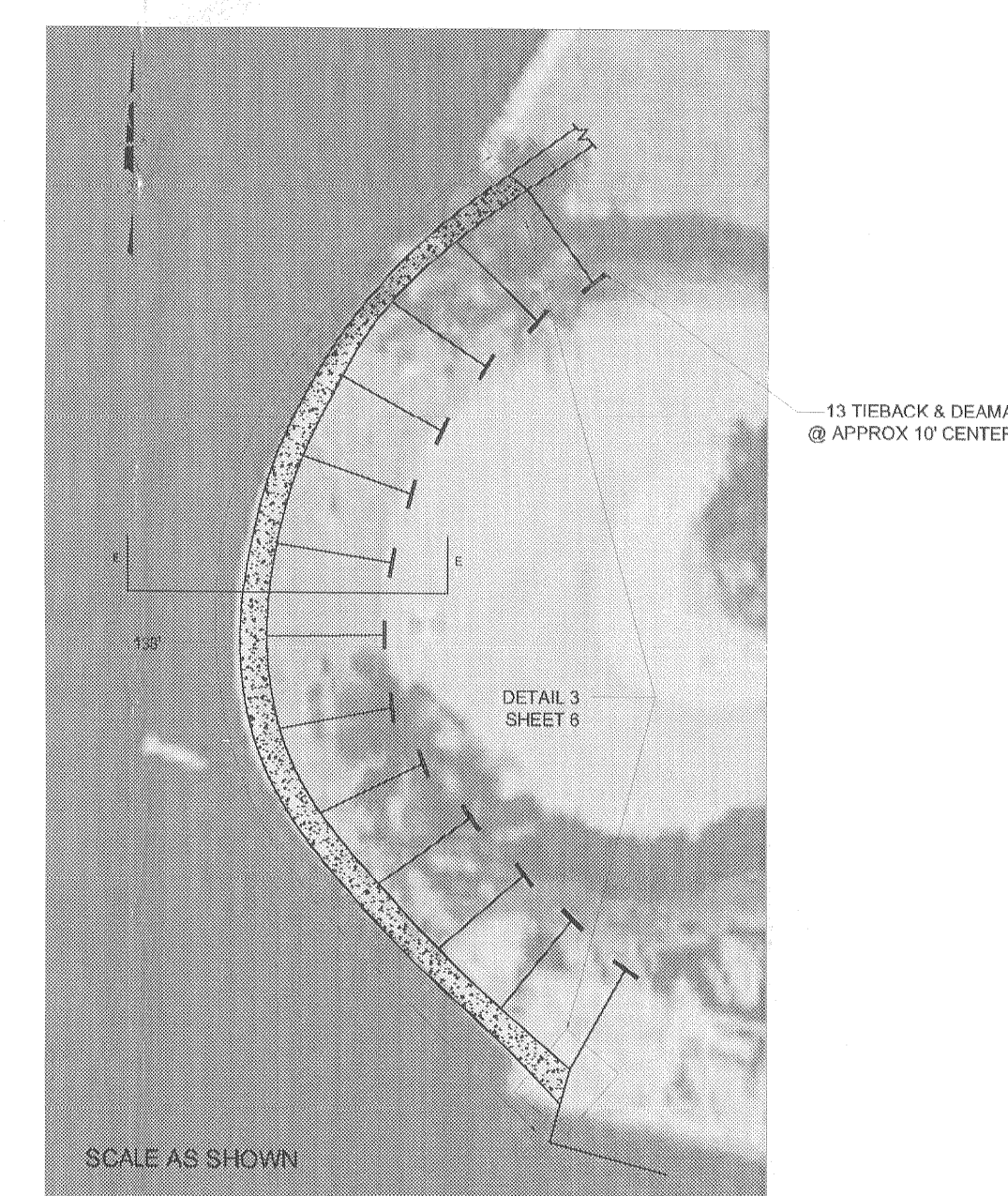
ATLANTIC AVE. BRIDGE SEAWALL
AERIAL PHOTO



183 RD ST. SEAWALL PLAN VIEW
SCALE: 1" = 29'



ATLANTIC AVE. BRIDGE REVETMENT
PLAN VIEW



ATLANTIC AVE. SEAWALL
PLAN VIEW

FULL SCALE

SCALE 3/8" = 1'-0"

SCALE 1/4" = 1'-0"

REV	DATE	DESCRIPTION	BY	CH	COR	APR
1	01-29-03	SUNNY ISLES BUILDING DEPT. & CALVIN, GIORDANO COMMENTS	JW	RJC	RJC	

P.E. SEAL

TITLE

AERIAL & PLAN VIEWS

PROJECT NAME

CITY OF SUNNY ISLES BEACH
SEAWALL REPLACEMENT AND RESTORATION

GA Calvin, Giordano & Associates, Inc.
Engineers • Surveyors • Planners
1800 Eller Drive, Suite 600
Fort Lauderdale, Florida 33316
Phone: 954 921 7781 Fax: 954 921 8807

CUTCHER & ASSOCIATES INC., COASTAL ENGINEERS
330 Clematis Street, Suite 214
West Palm Beach, Florida 33401
Ph: (561) 832-8121 Fax: (561) 832-6998

CAD FILE NAME	CAD ARCHIVE NAME
SCALE	DRAWING SIZE
REVISION	SHEET
DRAWING NUMBER	

NOTE: NOT TO BE USED FOR CONSTRUCTION UNLESS APPROVED.
APPROVED: _____ DATE: _____